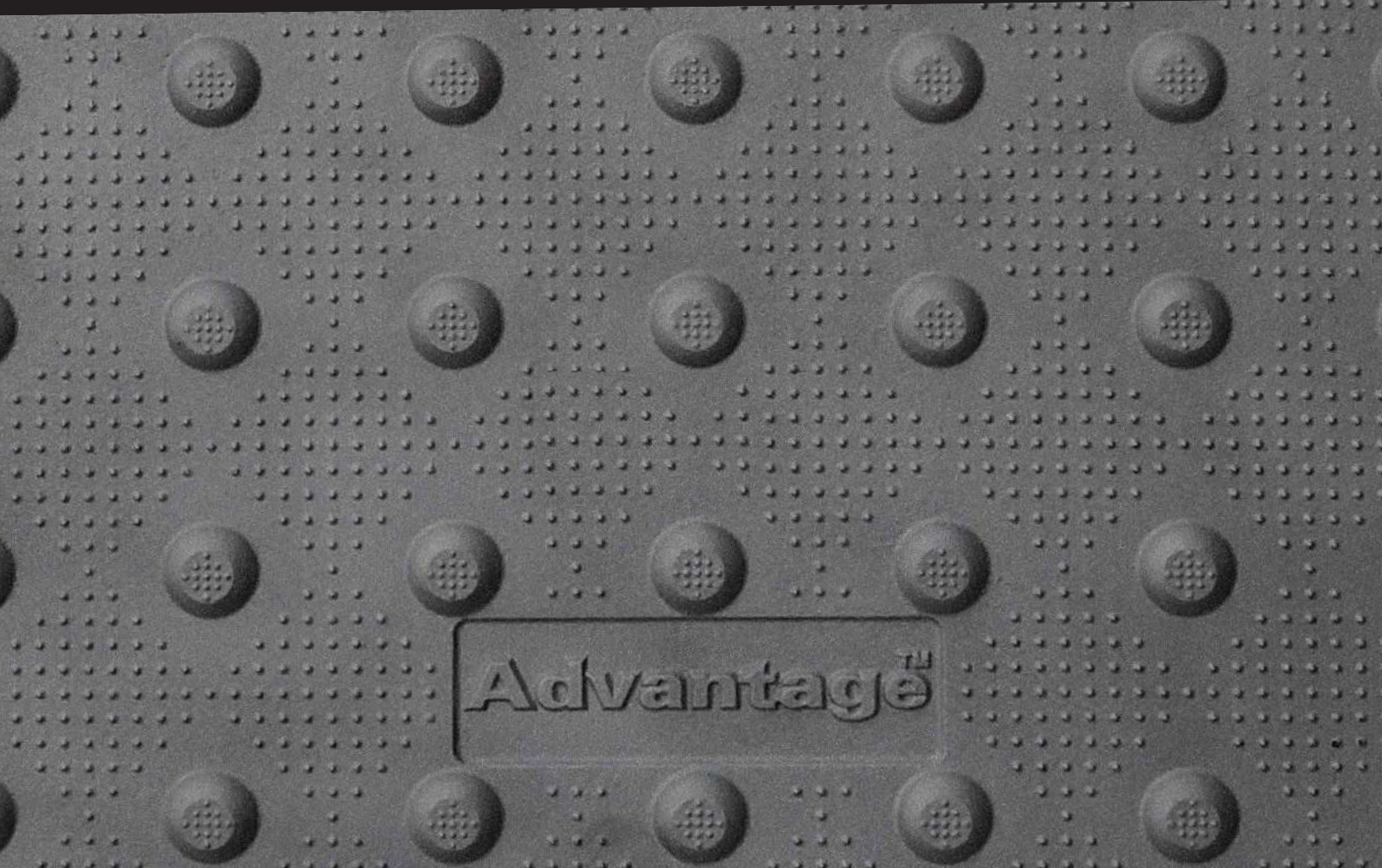




Leading The Way in Tactile Walking Surface Indicators



Designed for durability, Engineered for ultimate strength

The Advantage® Cast Iron Tactile Walking Surface Indicator system is engineered to endure the toughest conditions such as snow plows, excessive vehicular loads and heavy pedestrian traffic. Lightweight and easy to install, Advantage® Cast Iron plates have monolithic anchors with bolted connections allowing easy and secure placement between multiple plates.

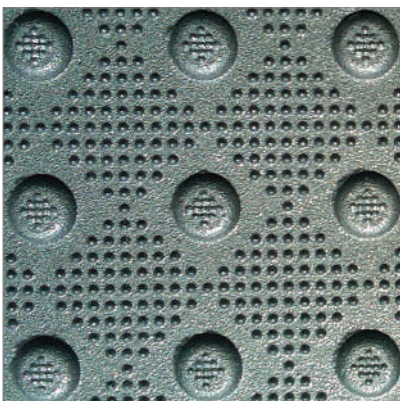
Applications

Advantage® Cast Iron plates are a wet-set, cast in place system for compliance with the Accessibility for Ontarians with Disabilities Act (AODA) on pedestrian curb ramps and crossings, transit platforms, vehicular passage ways and parking areas, also on top of stair landings and escalator approaches.

The Kinesik Advantage

- Largest selection of standard and radii plates
- Local service
- Reliable delivery
- Easy to install
- Wet & dry slip resistant surface
- Maintenance-free natural patina
- ASTM A48, Class 35B Grey Cast Iron
- 10 year manufacturer warranty

Advantage® Cast Iron TWSI are in full compliance with Canadian Accessibility Codes (AODA, CSA, ISO, OPSD and Building Codes)



STANDARD



Uncoated Natural
Patina

OPTIONAL COLOURS



Federal Yellow



Safety Red



Onyx Black

Powder coat includes zinc-rich epoxy primer base, durable UV and rust resistant finish. **Stocked and Available!**

PROFESSIONAL ASSOCIATIONS

Kinesik is proud to be a member of the following organisations:



Advantage[®] Cast Iron TWSI Plates

Complies with AODA Standards
Local Support • Quick & Easy to Install
Largest Selection of Standard & Radii Plates

ADVANTAGE[®] CAST IRON PLATES - STANDARD & RADII SIZES

Part No.	Description	Plate Size (in)	Plate Weight (lbs.)
ADV-CI-1824	Advantage [®] Cast Iron Plate	18" x 24"	35
ADV-CI-2424	Advantage [®] Cast Iron Plate	24" x 24"	42
ADV-CI-3024	Advantage [®] Cast Iron Plate	30" x 24"	54
ADV-CI-24-10R	Advantage [®] Cast Iron Plate for 10' Radius	24" (H)	41
ADV-CI-24-15R	Advantage [®] Cast Iron Plate for 15' Radius	24" (H)	39
ADV-CI-24-17.5R	Advantage [®] Cast Iron Plate for 17.5' Radius	24" (H)	39
ADV-CI-24-20R	Advantage [®] Cast Iron Plate for 20' Radius	24" (H)	38
ADV-CI-24-25R	Advantage [®] Cast Iron Plate for 25' Radius	24" (H)	39
ADV-CI-24-30R	Advantage [®] Cast Iron Plate for 30' Radius	24" (H)	43
ADV-CI-24-35R	Advantage [®] Cast Iron Plate for 35' Radius	24" (H)	43

QUICK & EASY INSTALLATION INSTRUCTIONS



Connect multiple plates together with 3/8" x 1 3/4" bolts.

Advantage[®] Cast Iron TWSI plates are engineered to exceed the highest government and industry standards.



Place and press plate into fresh setting concrete.



Tap plate in a grid pattern with a rubber mallet until concrete pushes through vents.



Clean plate and ensure no debris on surface.

SHIPPING & PACKAGING

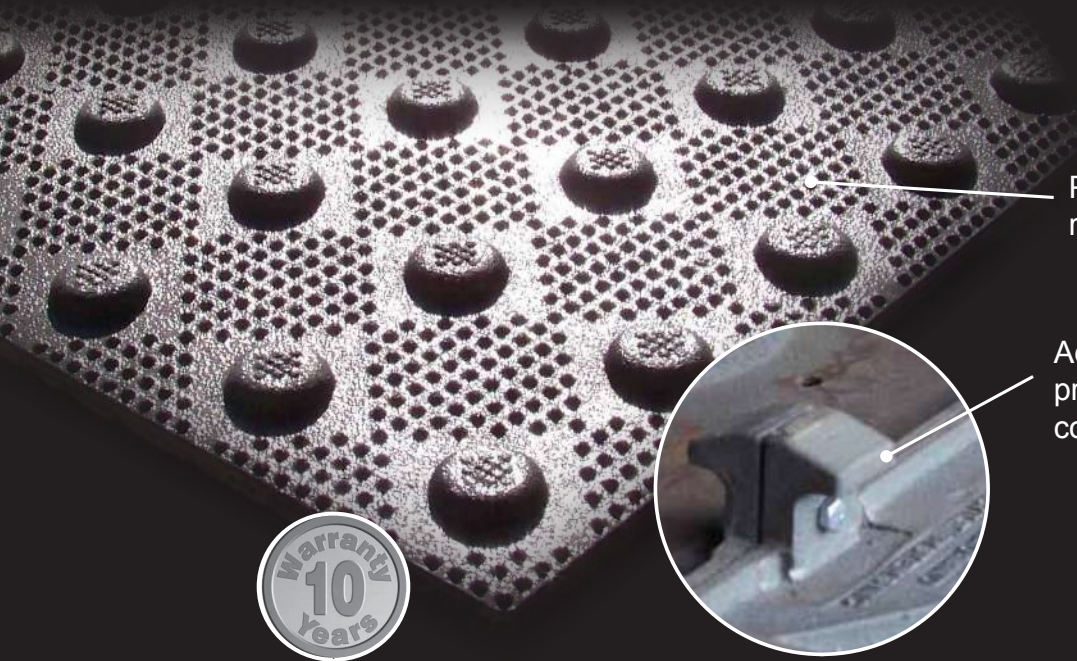
Advantage[®] Cast Iron Tactile Walking Surface Indicator plates are shipped as 12 plates per skid.



The Ultimate Solution in Detectable Warning Systems

The Toughest Tactile Walking Surface Indicator Plates Available

- AODA Compliant
- Reliable delivery
- Local service
- Light weight
- Exceptional longevity and maintenance free
- Cast Iron ASTM A48, Class 35B Grey Cast Iron
- Natural patina provides appealing and visual contrast
- Designed for Safety and Convenience
- Wet Cast in Place for New Construction
- Optional Colours: Federal Yellow, Safety Red and Onyx Black



Permanent slip resistant technology

Advantage® Cast Iron anchors provide a permanent and secure concrete locking system



KINESIK Engineered Products Incorporated

2213 North Sheridan Way
Mississauga, Ontario L5K 1A3
Canada

Tel: 855.364.7763
Fax: 800.769.4463
www.kinesik.ca

Follow Us on Social Media

